

TO TEST TANK WEIGHING ASSEMBLY (TWA) BALANCE:

1. Measure voltage across green (+) and white (-) wires.
2. Voltage measurement should not vary more than 20% between TWA on common vessel.

Rated Capacity (lbs): .5K, 1K, 1.5K, 2K, 2.5K, 4K, 5K and 10K
 Full Scale Output (mV/V) 3.0 +/- 0.25%

Bridge Resistance:

Input (ohms)	343 - 357
<hr/>	
Output (ohms)	349 - 355

Sealing: Environmentally Protected for NEMA 6 or IP67

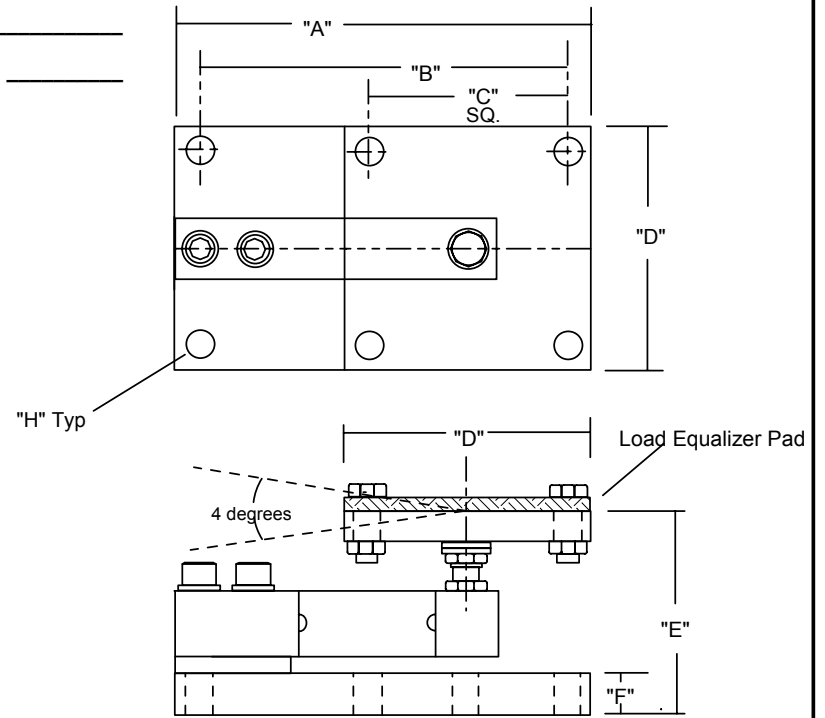
Material/Finish: Alloy Tool Steel Electroless Nickel

Cable: 4-Conductor, 22 AWG, Shielded and Jacketed, 20 ft. std.

Capacity (lbs)	A	B	C	D	E	F	H
to 500	7.12	6.00	4.00	5.00	3.88	.70	.63
1,000 - 4,000	7.12	6.00	4.00	5.00	4.00-4.50	.70	.63
5,000 - 10,000	8.50	7.00	4.00	5.00	5.00-5.50	.94	.63

ACCURACY CLASS	Standard (Class 3)	NTEP (Class III)
Combined Error (FSO)	<.03%	
Non-Linearity (FSO)	<.03%	
Hysteresis (FSO)	<.02%	
Creep (FSO) in 20 minutes	<.03%	
Temperature /Compensated Range (degrees F/ degrees C)	14 to 104 degrees -10 to 40 degrees	5,000 Divisions Single or Multiple
Temperature Effects:		
Zero / degrees F (FSO)	<.0015%	
Span / degrees F (of load)	<.0008%	

Tank Capacity: _____
 Tank Tare Weight: _____
 Number of Cells: _____
 Cable Length Req'd: _____



Temp. Operating Range (degrees F/degrees C): 0 to 150 degrees/ -18 to 65 degrees
 Non-Repeatability (FSO): <0.01%
 Zero Balance (FSO): +/- 1.0%

Excitation Voltage (VDC): 10 (15 Max)
 Safe Overload (FSO): 150%
 Ultimate Overload (FSO): 300%
 Safe Sideload (FSO): 100%
 Sideload Rejection Ratio: 500:1
 Deflection (inches): +/- 10%

WIRING	
Red:	+ Input
Black:	- Input
Green:	+ Output
White:	- Output
Bare:	Shield

S.1.103
W.1.103



1150-D Burnett Ave, Concord, CA 94520 USA
 1-800-893-6723 US & Canada, Fax: 925-686-6713
www.forceflow.com / info@forceflow.com

File: T4\O&M\TWA\WIZITWA PC820.tcw (R03.pdf) (WEB: POWER820.pdf)
 08/15/03 MT

Model PC820 TWA
TANK WEIGHING ASSEMBLY
(500 to 10,000 lb. Systems)

Drawn by: SLJ/MT
 Date: 11/04/96
 Revised: 08/15/03
 Scale: NONE

Drawing Number
29933