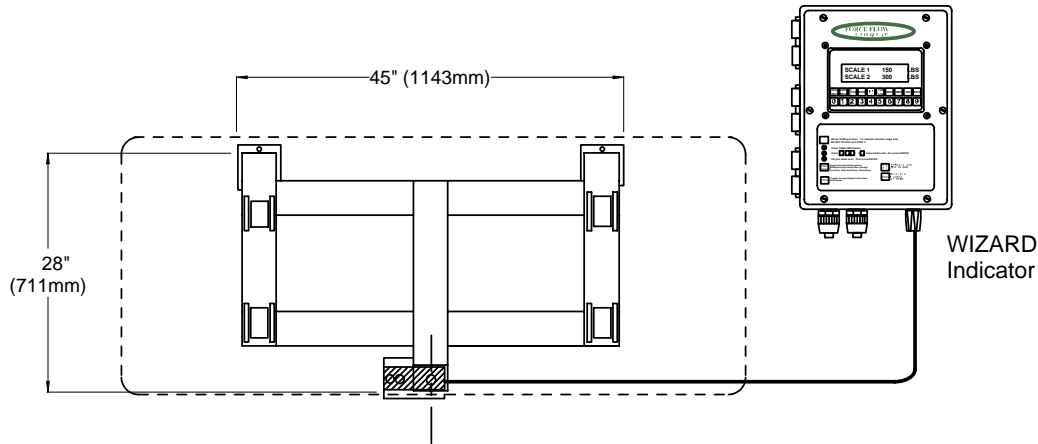


**IMPORTANT:** Position the Load Cell so that it is parallel with the scale frame. Read the "Installation" section carefully for proper placement of the frame.



JOB REFERENCE \_\_\_\_\_ /s/ \_\_\_\_\_

SUBMITTAL DATA:

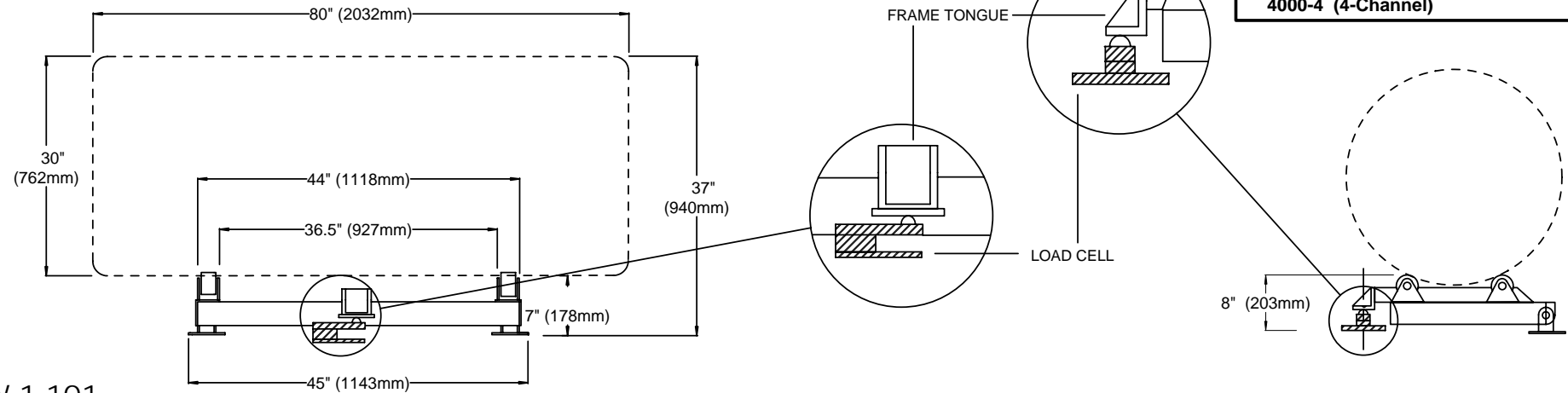
Qty	Platform/Sensor	Cable Length	Display Increments
		FT	
		M	
		FT	
		M	
		FT	
		M	
		FT	
		M	

WIZARD INDICATOR MODEL NO: \_\_\_\_\_

4-20mA OUTPUTS \_\_\_\_\_

RELAYS \_\_\_\_\_ DRY CONTACT / SOLID STATE  
N.O. / N.C.

OTHER OPTIONS: \_\_\_\_\_



**Model Number (Frame and Load Cell)**  
**DR40 (4000 lbs)**  
**DR20K (2000 kg)**

**Wizard Indicator (sold separately)**  
**4000-1 (1-Channel)**  
**4000-2 (2-Channel)**  
**4000-3 (3-Channel)**  
**4000-4 (4-Channel)**

W.1.101



1150-D Burnett Ave, Concord, CA 94520 USA  
 1-800-893-6723 US & Canada, Fax: 925-686-6713  
 www.forceflow.com / info@forceflow.com

File: T4IO&M\TON WIZWIZ SGL.tow (TW01.pdf) (WEB: TON1WIZ.pdf)  
 EMAIL/DRAWINGS/TON\_WIZ SGL.pdf

**ELECTRONIC SINGLE TANK SCALE**  
**CHLOR-SCALE with WIZARD INDICATOR**  
**(4000 lb or 2000 kg Capacity)**

Drawn by: SLP  
 Date: 09/01/95  
 Revised: 01/21/97  
 Scale: NONE

Drawing Number

**30280**