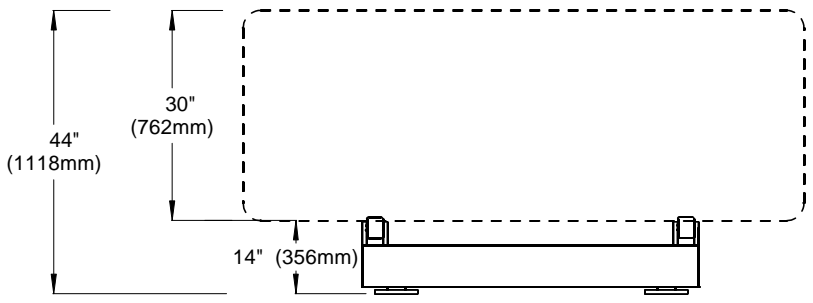


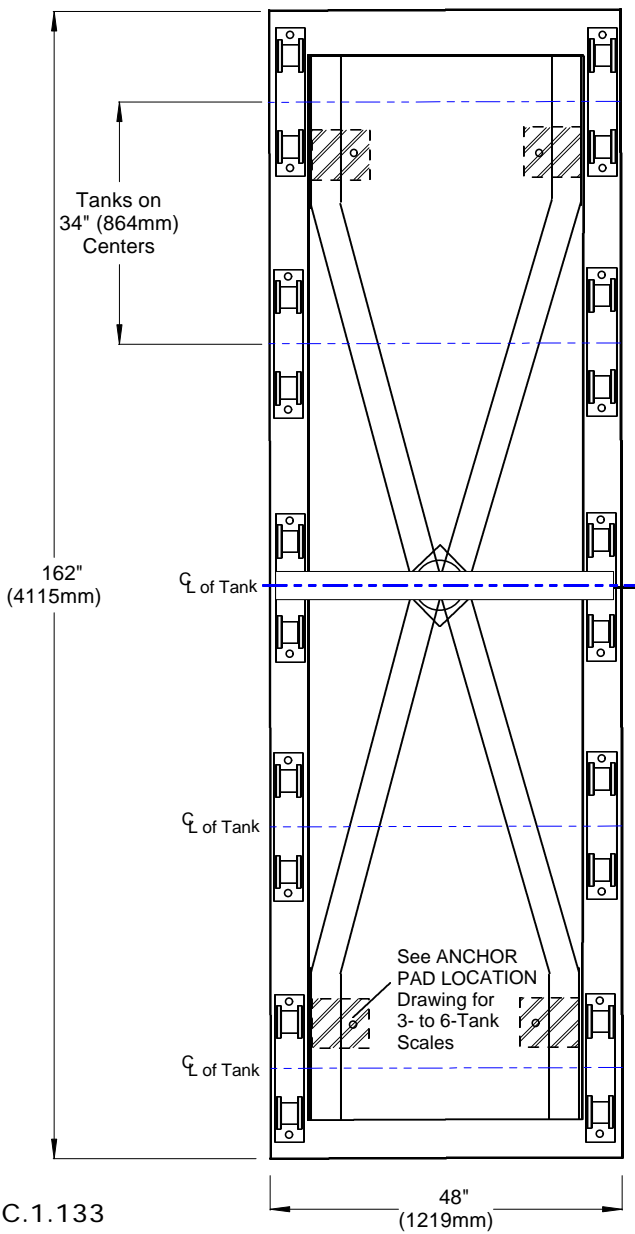
NOTE: Use 5/8" x 1-1/2" (16mm x 38mm) Anchor Bolts
 RECOMMENDATION: 12" (305mm) minimum pad be used for each foot. DO NOT PREPOUR ANCHOR BOLTS. Use frame as template.

MODEL NUMBERS (for Complete Scale)
 12D200 (20,000 lbs)
 12D100K (10,000 kgs)
 Complete with 12" Century Dial Indicator

_____ Model Number of Complete Scale
 _____ Feet of Tubing (20/6M std)
 _____ Inch Diameter Century Dial (Lbs. or Kgs. _____)



WEIGHT: 1890 lbs/857 kgs
 (palettized for shipment)



C.1.133



1150-D Burnett Ave, Concord, CA 94520 USA
 1-800-893-6723 US & Canada, Fax: 925-686-6713
 www.forceflow.com / info@forceflow.com

HYDRAULIC 5-TANK SCALE
CHLOR-SCALE with CENTURY INDICATOR
(20,000 lb. or 10,000 kg. Capacity)

Drawn by: SLP
 Date: 09/01/95
 Revised: 12/08/98
 Scale: NONE

Drawing Number
29461