

JOB REFERENCE _____ /s/ _____

SUBMITTAL DATA:

| Qty | Platform/Sensor | Cable Length | Display Increments |
|-----|-----------------|--------------|--------------------|
| | | FT | |
| | | M | |
| | | FT | |
| | | M | |
| | | FT | |
| | | M | |

WIZARD INDICATOR MODEL NO: _____

4-20mA OUTPUTS _____

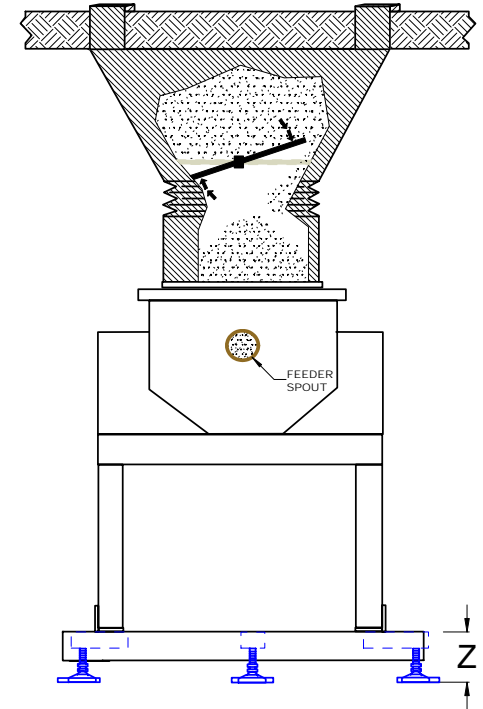
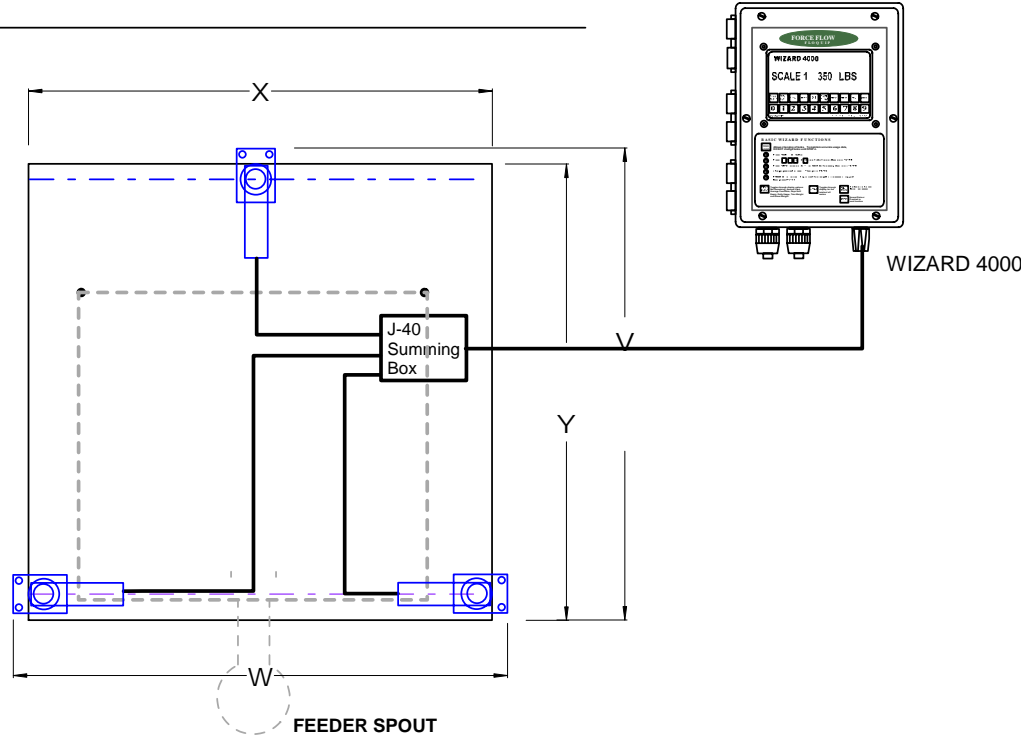
RELAYS _____ DRY CONTACT / SOLID STATE
N.O. / N.C.

OTHER OPTIONS: _____

| Model No: | Metric Model: | W | X | Y | Z |
|---------------------------|---------------------------|-------|-------|-------|-------|
| 27-DR10DVF-HA (1000 lbs) | 27-DR5KDVH-HA (500 kg) | 28.5" | 29.5" | 27.5" | 2.00" |
| 30-DR10LPVF-HA (1000 lbs) | 30-DR5KLPVF-HA (500 kg) | 31.0" | 32.0" | 30" | 3.25" |
| 30-DR20LPVF-HA (2000 lbs) | 30-DR10KLPVF-HA (1000 kg) | 31.0" | 32.0" | 30" | 3.25" |
| 30-DR30LPVF-HA (3000 lbs) | 30-DR15KLPVF-HA (1500 kg) | 31.0" | 32.0" | 30" | 3.25" |
| 40-DR15LPVF-HA (1500 lbs) | | 41.0" | 42.0" | 40" | 3.25" |
| 50-DR15LPVF-HA (1500 lbs) | | 51.0" | 52.0" | 50" | |
| 60-DR15LPVF-HA (1500 lbs) | | 61.0" | 62.0" | 60" | |

WIZARD 4000 Indicator:
 4000-1 (1-Channel Indicator)
 4000-2 (2-Channel Indicator)
 4000-3 (3-Channel Indicator)
 4000-4 (4-Channel Indicator)

* PROVIDE FACTORY WITH FEEDER STAND FOOTPRINT FOR MOUNTING HOLE PLACEMENT



1150-D Burnett Ave, Concord, CA 94520 USA
 1-800-893-6723 US & Canada, Fax: 925-686-6713
www.forceflow.com / info@forceflow.com

File: T41O&MVVF WIZHA VFVF WIZ HA3.tcw (VW01.PDF)
 EMAIL/DRAWINGS/VF/VF WIZ HA3.PDF

**VOLUMETRIC FEEDER SCALE
 HI-ACCURACY with WIZARD 4000
 (WITH 3 LOAD CELLS)**

Drawn by: SLP/JG
 Date: 10/08/99
 Revised: 11/23/05
 Scale: NONE

Drawing Number
30313