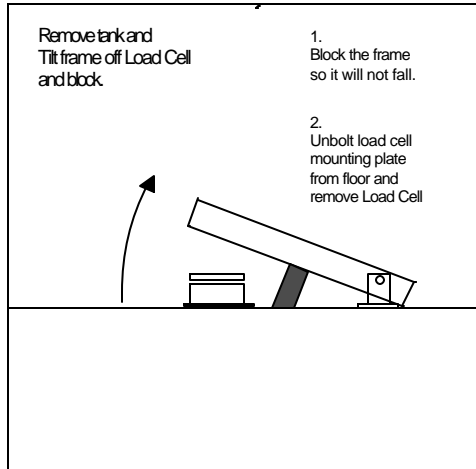
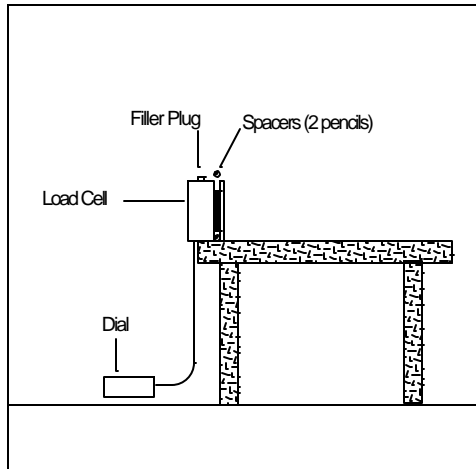


SYSTEM IS FACTORY FILLED AND READY FOR INSTALLATION (occasional refilling may be required)



STEP 1



STEP 2

STEP 1:

Remove Tank. Lift up Frame, pivoting on hinge. Place blocks under frame to hold frame up during this process. Remove Load Cell from under frame.

STEP 2:

At a convenient work height, place Load Cell on its side with filler port pointing skyward. Either lay dial on floor, or snap dial loose at disconnect and lay hose on floor so any trapped air will travel to cell. Remove plug on cell. To maintain 5/16" gap between plates, slide a pencil just inside of lip on each side. Take care not to exceed 5/16" to avoid damaging internal diaphragm).

STEP 3:

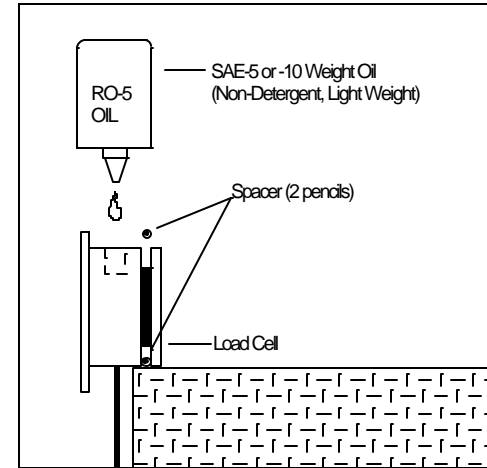
Fill to top of threads with Force Flow RO-5 Oil. One spare pint is provided with scale. If RO-5 is not available, the following may be substituted:

- SAE 5W or 10W, non-detergent machine oil
- Automatic Transmission Fluid (ATF, Dextron, etc)
- 3-In-1 Oil (in an emergency only)

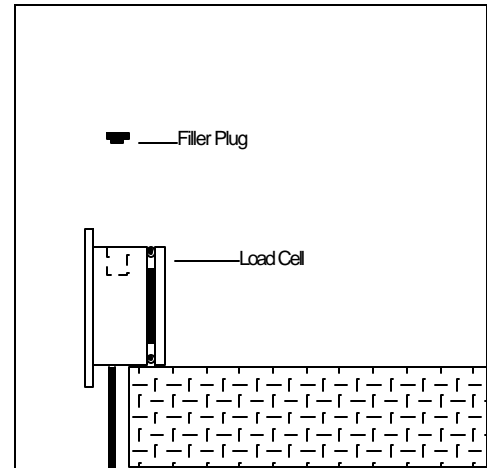
STEP 4:

Jiggle hose and cell to release trapped air. Inspect o'ring and reinsert 1/4" plug. On some older scales, plug might have pipe threads. If so, carefully wrap with Teflon tape before inserting.

Remove pencils. Re-attach Load Cell to floor and place frame(s) as originally installed on cell. Connect or mount dial.



STEP 3



STEP 4

C.3.311



1150-D Burnett Ave, Concord, CA 94520 USA
1-800-893-6723 US & Canada, Fax: 925-686-6713
www.forceflow.com / info@forceflow.com

File: T4\O&M\ACCESSORY\REFL1256.tcw (A02.pdf) (WEB: A02.pdf)

LOAD CELL REFILLING INSTRUCTIONS

Drawn by: SLP
Date: 01/02/93
Revised: 01/12/01
Scale: NONE

Drawing Number
30376